
	EMERGENCY MEASURES RADIO GROUP
	OTTAWA ARES

Two Names - One Group - One Purpose

Yearly Status & Plans For Fall 2007

City of Ottawa Support

- Yearly Operational Grant - \$1000
- UHF 4 bay antenna and Tri-band Antenna Installation - \$1400
- EOC Renovation Equipment Changes - \$3300
- Office of Emergency Management -Book and pay internal cost monthly for Management Team meeting room.
- Ottawa Fire Service - Access to Fire Training Centre, repeater sites, the EMRG communications room and space for equipment storage.

Equipment Donations

- UHF Repeater: Used GE Low band UHF Repeater, cabinet, duplexer, 30A power supply/charger, 100AH Battery
- Cabinets & Radios: 3 matching equipment cabinets and shelf hardware, 2 VHF 99 channel radios, 2 10A Power supplies with battery backup.
- Two commercial equipment shipping boxes with radio equipment, suitable for shelter kit.

Repeater & Antenna Changes

- VE3OCE VHF Voice (146.880 -): New equipment (Motorola MTR2000) and antenna (210C-4, on top of 120 ft tower)
- VE3OCE VHF Data (145.030): New equipment (Motorla Spectra) and antenna (210C-4, on top of 120 ft tower)
- VE3OCE UHF Voice (443.800+): New repeater (Kenwood TKR-850) and antenna (310C-4, on tower at 105 ft)
- VA3OFS UHF Voice (444.950+): New repeater (Kenwood TKR-850) using a Diamond Tri-band antenna at 30 ft. (To Be Installed)
- Diamond Tri-Band (144/220/440) antenna for EMRG communications room installed on side of tower at 55 ft.



EXPECTATIONS Vs. CAPACITY



By the end of 2005 it was clear that the first EMRG 1 year plan contained at least 5 years of work.

Now it is clear that the EMRG plan for 2007 includes expectations for meetings, training, exercises and projects, which cannot be achieved.

It is critical that partner expectations align with EMRG capability to deliver, so we need to understand what EMRG can realistically deliver. This includes the yearly training and exercising, plus incremental project work.

IT TAKES WORK

It takes a lot of work to keep EMRG running effectively. Good meetings, training, exercises and projects take a LOT of time to plan, prepare, deliver and wrap up.

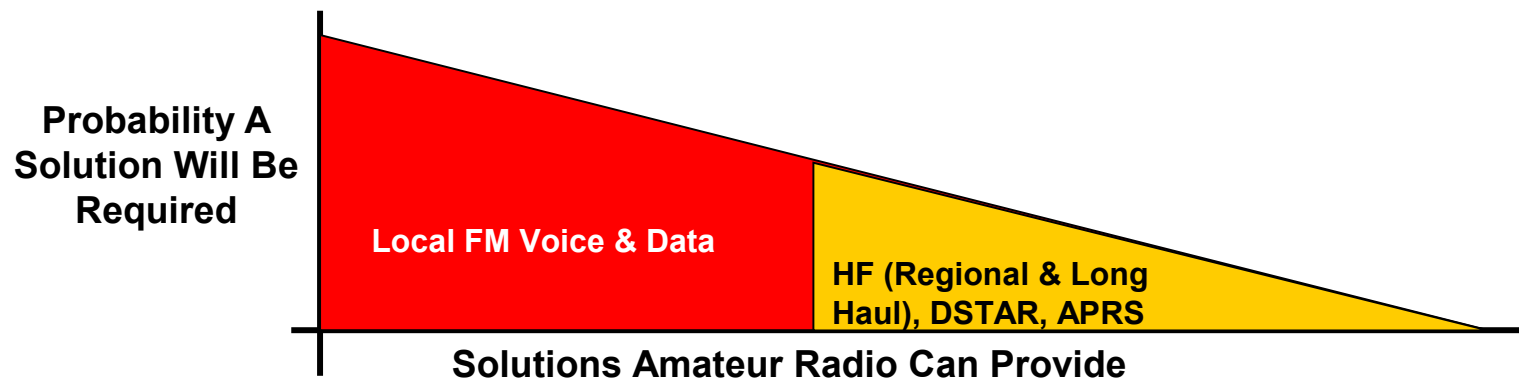
If it is worth doing, it is worth doing right!

EMRG will not take on tasks that cannot be done well.

- It is better to not have a newsletter or net, than to produce something that does not provide value.
- It is better to have a few solutions that are well documented, understood and practiced, than a long list of solutions that may not be available.

There are many things Amateur radio could provide, and there are many things that would be nice to do.

EMRG strategy must prioritize activities based on volunteer availability, funding, equipment and probability of a solution being required.



LOCAL EMPHASIS

Emphasis is on local communications because;

1. It will always be required
2. It will generate almost all of the traffic
3. Sending and receiving messages outside the City of Ottawa requires a local communications infrastructure to collect and deliver the message from the local source.
4. Satellite has become the long haul backup solution of choice for Emergency Communications.
5. There are plenty of HF (long distance) stations in Ottawa that can be used to relay messages if required.

EMRG PLAN

Focus On

Partners Involved In

Humanitarian

Support

They need & want our help!

EMRG Key Partners

Transportation, Utilities & Public Works (TUPW)
 Potential Partnership
 (Equipment Transportation)
 (Generators)
 (Temporary Antenna Structures)

Police-Fire-Paramedics Communications Centres
 Liaise With EMRG
 No Plans For Using EMRG

Ottawa Fire Service (OFS)
 Provide Infrastructure
 (Communications Room)
 (Equipment Storage)
 (Repeater Sites)

Office of Emergency Management (OEM)
 Manage The Relationship
 (Ongoing Contact & Coordination)
 (Provide Funding)
 (Activate EMRG For The City)



Community Services
 User Of EMRG Services
 (Shelters)



Ottawa Red Cross



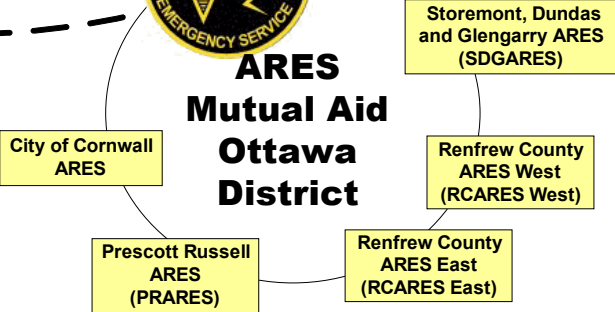
Ottawa ARES

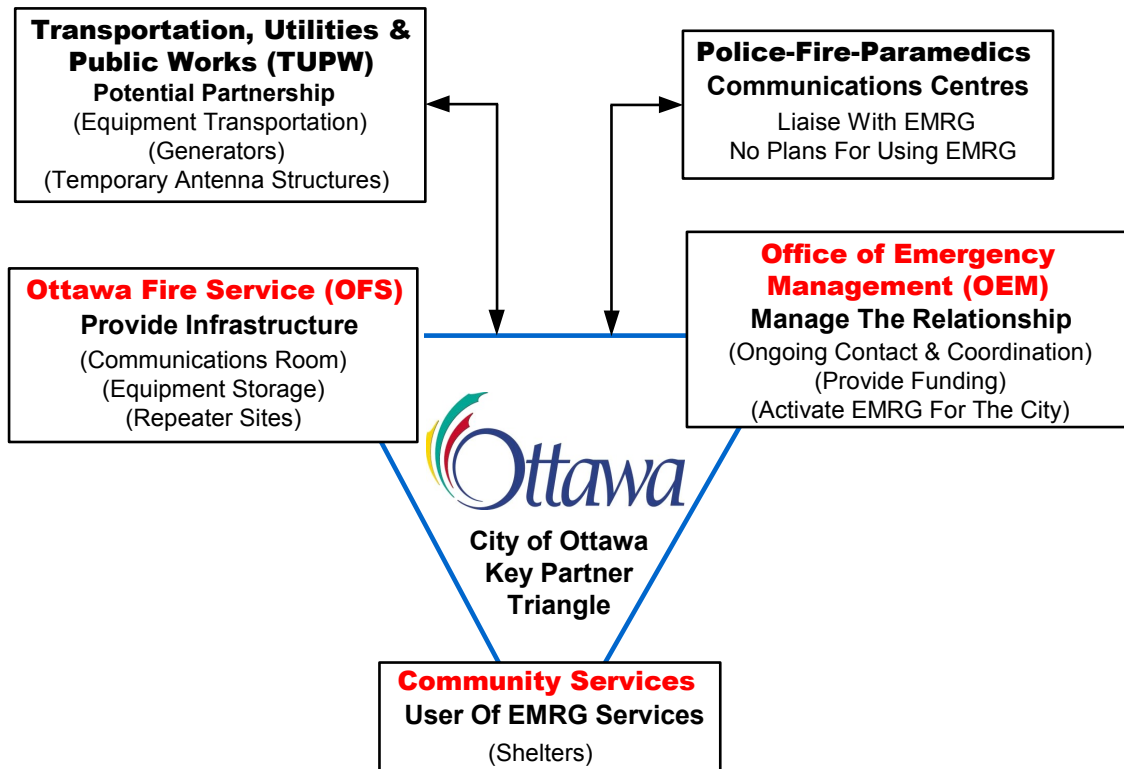
“Providing Emergency Communications For Humanitarian Support”

- 
- The Ottawa Hospital (TOH)
 - Civic Campus
 - Riverside Campus
 - General Campus
 - Montfort Hospital
 - Royal Ottawa Hospital (ROH)
 - Ottawa Public Health (OPH)
 - Queensway Carleton Hospital (QCH)
 - University of Ottawa Heart Institute
 - Children's Hospital of Eastern Ontario (CHEO)
 - Sisters of Charity of Ottawa Health Services (SCOHS)
 - Saint-Vincent Hospital
 - Elisabeth Bruyère Health Centre



ARES Mutual Aid Ottawa District





SOLUTION TYPES

Primary Solution

- Amateur Radios “1 to Many” dispatch style communications has significant benefits over telephones and cell phones for linking multiple sites together, such as a series of shelters.

Augmentation Solution

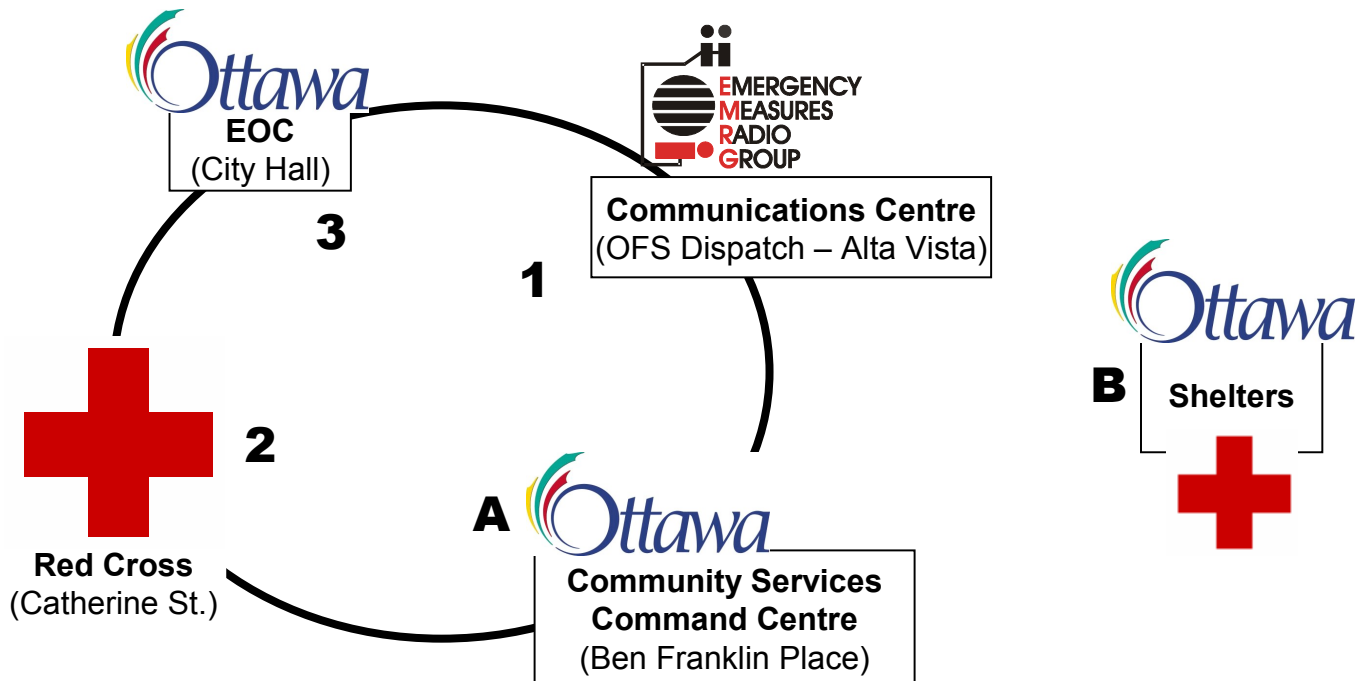
- Amateur radio can provide additional capacity when phones and cell phones are unable to provide the volume of information communications required.

Solution of Last Resort

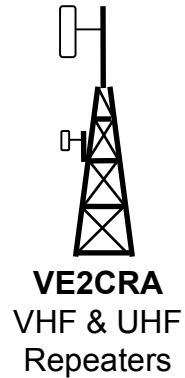
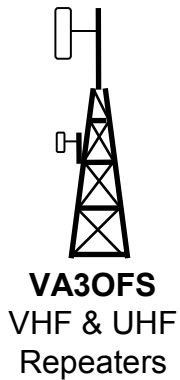
- Alternative communications solution when telephones and cell phones have failed.
- If this is the only reason for partners to call, there won't be many calls.

CRITICAL SITES

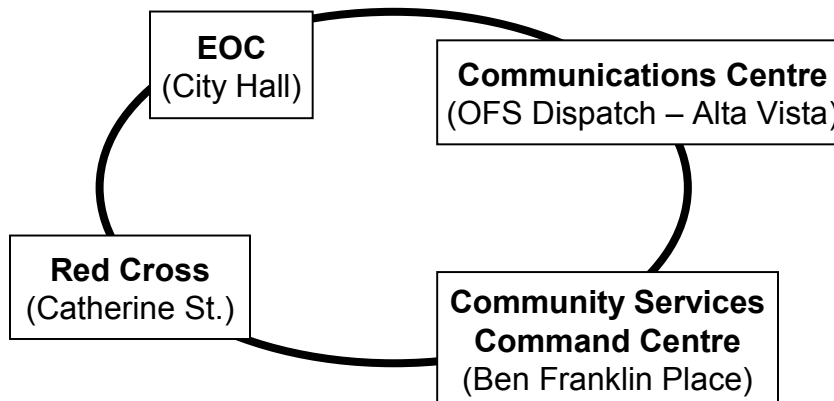
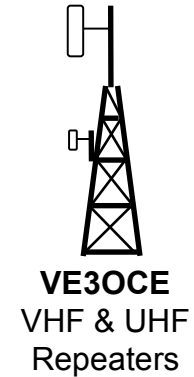
There are three permanent radio sites that are currently not functional. These must be addressed immediately and plans must be put in place to deliver portable solutions for two other key sites.



CHANNEL CAPACITY



220 Simplex



WORK TO BE DONE

Communications Room

- Clear out room, remove old counters and equipment cabinets
- Fill holes, paint walls and install new counters
- Re-install radio and computer equipment in new equipment cabinets
- Clean up storage area

Red Cross

- Complete radio installation and wiring of cabinet with 144/220/440 Voice + VHF Packet
- Move antenna for Packet (Shield dual band antenna from others)
- Connect cabinet radios to antenna cables

City of Ottawa EOC

- Prepare and Install 2 inband + 1 crossband repeaters, plus VHF packet with WiFi inside.
- Move antenna for Packet (Shield dual band antenna from others)

With the main VHF & UHF repeaters now in place, completion of the critical radio sites will provide the opportunity to focus EMRG on operational skills, including;

- Training on site operation
- Hands on Practice
- EMRG Exercises
- Partner Exercises

EMRG will not be participating in the annual ARES Simulated Emergency Test (SET) this year. The EMRG local exercise will take place once we have the equipment installations completed.



WORK SESSIONS



In order to complete the work on the critical sites, a series of work sessions will be held on Thursday nights and Saturday mornings from now until the work is completed.

Other times will be selected if they are more convenient for volunteers, to ensure everyone has the opportunity to participate.

PLEASE SIGN UP TO HELP!

The EMRG web site provides information related to Amateur radio emergency communications, specifically as it relates to the City of Ottawa.

- Y Project Information
 - Newsletters
 - Upcoming Events
 - Documentation
 - Links to related information

Team Leader: Peter Gamble - VE3BQP

pgamble@emrg.ca